

17' Catboat  
Puffin

17' Cruising Cat  
Liberty

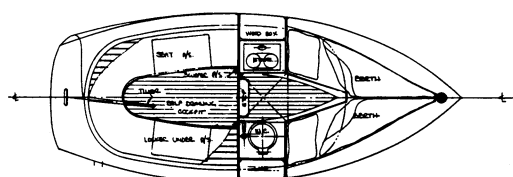
17' Cruising Sloop

17' Cruising Yawl

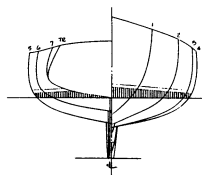
17' Gaff Sloop

17' Sloop

17' Cutter

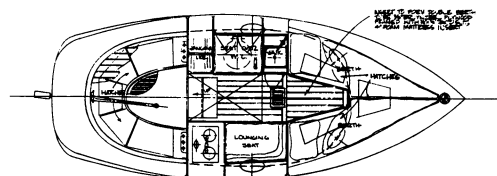
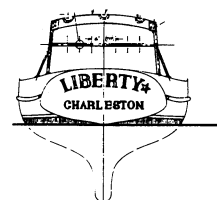


17' Catboat Puffin



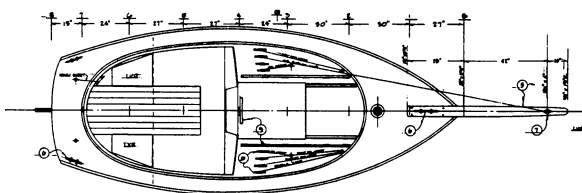
## Puffin & Liberty 17' Catboat & Cruising Cat

Design number 67  
1970

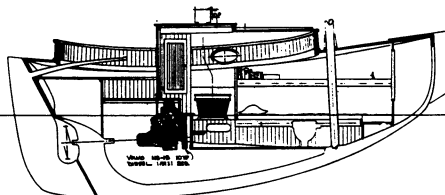


17' Cruising Cat Liberty

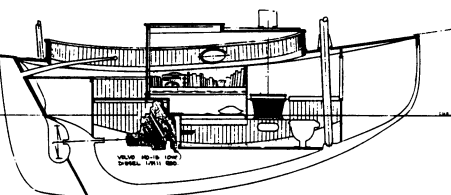
This handsome tabloid cruiser accommodates two, either in a V-berth/double or singles. She has a head, stove, and plenty of storage space. The sink, counter, lounging seat and hanging locker for oilskins are additions in Cruising Cat version, which has a shorter cockpit and an optional deeper keel with room for an inboard engine. Inboard or outboard power of 5 to 10 horsepower is all that is needed. She has a deep, self-draining cockpit, she performs well in light airs and is able to carry full sail in 20 knots of wind. A safe, sane investment — an ideal first boat for the amateur builder. The alternate rigs, taken from the 18' Canoe Yawl and 20' Gaff Sloop, can be used on the basic 17' Catboat hull. Optional interior details can be expanded by way of joinery details and sections on a custom basis to order. An alternative Marconi sloop rig is also available, as are gaff cutter and topsail sloop rigs.



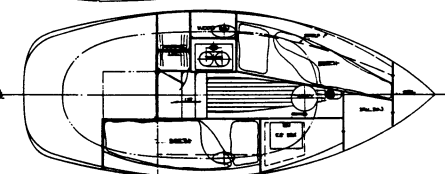
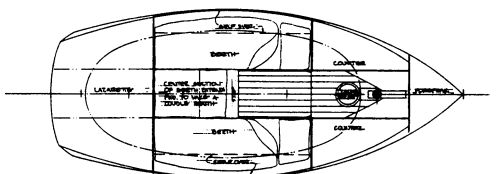
17' Gaff Sloop



17' Cruising Sloop



17' Cruising Yawl



### Particulars:

	17'	19'	26'-3"
Length overall	17'-0"	19'-0"	26'-3"
Length designed waterline	15'-1½"	16'-9"	24'-0"
Beam	7'-0"	7'-0"	9'-6"
Draft	2'-6" or 3'-6"	3'-6" or 2'-6"	4'-6"
Freeboard:			
Forward	3'-4"	3'-4"	4'-3¼"
Least	1'-11"	1'-11"	2'-7 3/8"
Aft	2'-2"	2'-2"	3'-0"
Displacement, cruising trim. lbs.	2,950 or 3,600	3,025 or 4,120	11,000
Displacement-length ratio	381 or 464	287 or 391	355
Ballast	850 or 1,200	900 or 1,200	3,300
Ballast ratio	29% or 41%	29%	30%
Sail area, square feet	200 to 300	254 to 342	560
Sail area-displacement ratio	13.62 to 23.34	15.81 to 21.29	18.12
Prismatic coefficient	.53	.544 or .539	.562
Pounds per inch immersion	356	390	736
Entrance half-angle	26°	22°	21°
Water tankage, gallons	20	13	40
Fuel tankage, gallons	10	13	20
Headroom	4'-4" to 4'-10"	4'-4" to 4'-10"	6'-2"